

# Meat



**\$3.99** lb.  
 USDA Choice Grade  
 Beef Shoulder - English Roast

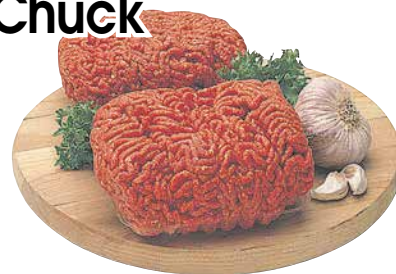
USDA Choice Grade Beef  
**Top Sirloin Steak**

**\$4.99** lb.



Fresh Certified  
**Ground Beef Chuck**

**\$2.99** lb.



Fresh Pork Loin  
**Assorted Pork Chops**

**\$1.79** lb.



Fresh Pork  
**Baby Back Ribs**

**\$2.99** lb.



Fresh Smithfield  
**Pork Tenderloins**

**\$2.99** lb.



Fresh Smithfield  
**Marinated Tenderloins or Loin Fillets**

18.4 oz. pkg.  
 27.2 oz. pkg.

**\$4.99** Each



Oscar Mayer  
**Sliced Bacon**  
 12 - 16 oz. pkg.

**\$3.99** Each



Fresh Gerber  
**Chicken Boneless and Skinless Breast**

**\$3.99** lb.



Frozen  
**Cod Loins**  
 8 oz portions average size

**\$5.99** lb.



USDA Choice Grade Beef Shoulder - English Steaks .....	\$4.19 lb.
USDA Choice Grade Beef for Stew .....	\$4.29 lb.
Fresh Pork Loin - Center Cut Rib or Loin Chops .....	\$2.49 lb.
Fresh Pork Loin Country Style Ribs.....	\$1.99 lb.
Hormel Family Style Dinners - 15 oz. pkg. ....	\$4.99 each
Hormel Side Dish Mashed Potatoes - 20 oz. pkg.....	\$2.99 each
Oscar Mayer Deli Style Thin Sliced Ham, Turkey, or Beef - 8-9 oz. tubs .....	\$2.99 each
Star brand Ham, Chicken, Egg, Tuna, or Pimento - 11 oz. pkg. ....	\$2.19 each

Prices effective October 18 through October 24, 2018